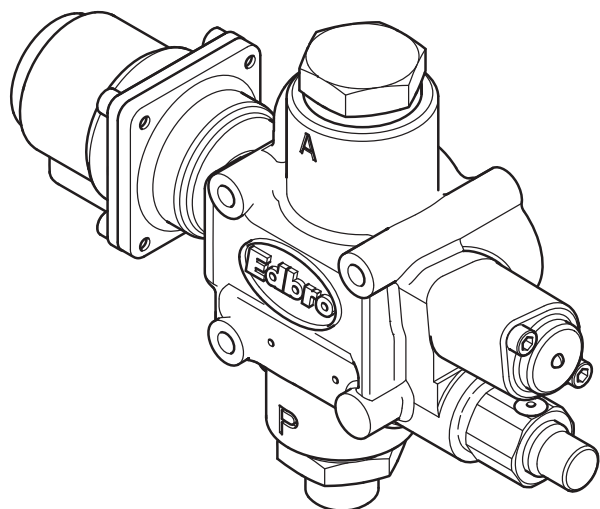
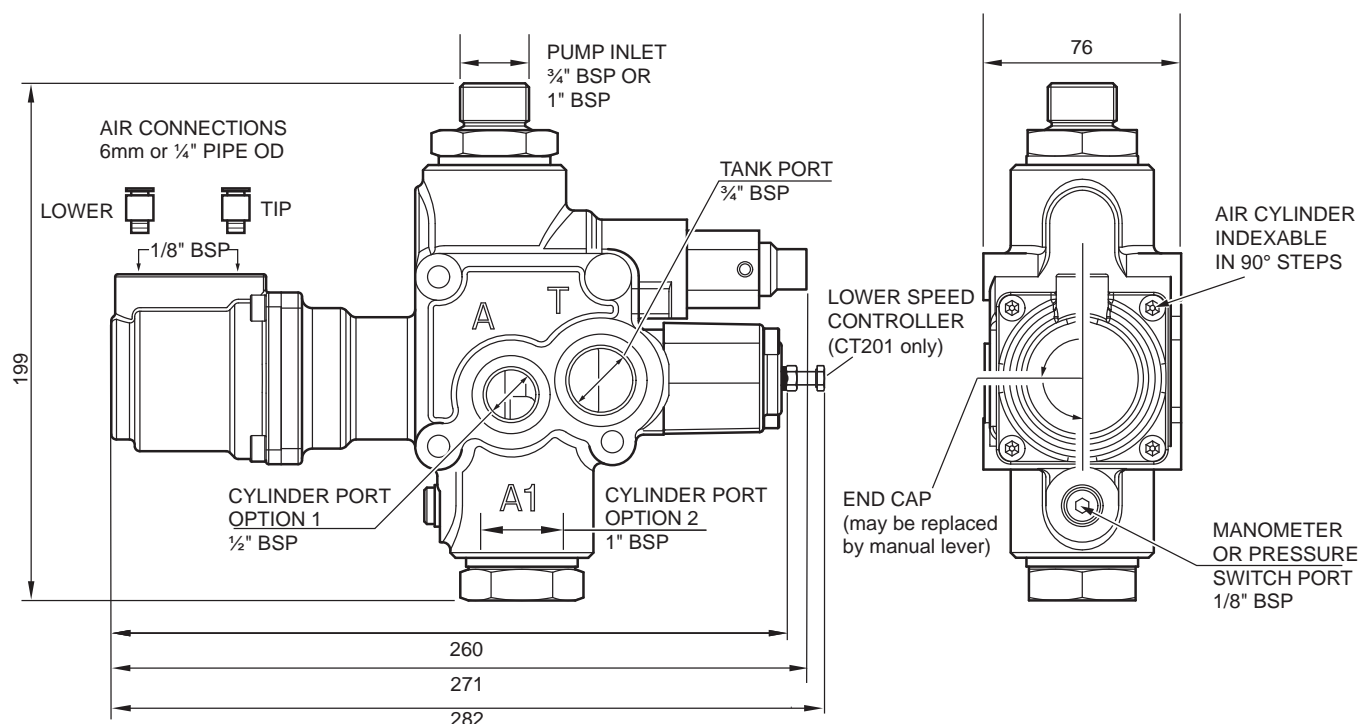


Hydraulic Control Valve for Tipper Applications - CT200/CT201



- Fully proportional - excellent lowering control when loaded
- No system filtration required
- High flow capacity for reduced cycle times
- Compact and lightweight
- Interchangeable with previous VT valve range
- Multiple mounting options
- Pressure switch point provided
- Single pressure or two pressure relief valve cartridges available
- CT201 with adjustable lowering speed is available



Part Number	Pump Inlet	Pressure (Bar)
CT200		P
CT201 (with adjustable lower speed)		
M = 6mm air E = 1/4\" mm air	075 = 3/4\" BSP 100 = 1\" BSP	90, 120, 135, 150, 165, 175, 200, 220, 250 000 No cartridge fitted

(Mounting bolts and face O-rings supplied with each valve)

All dimensions are given in mm unless otherwise stated. Technical Specifications are subject to change without notice.

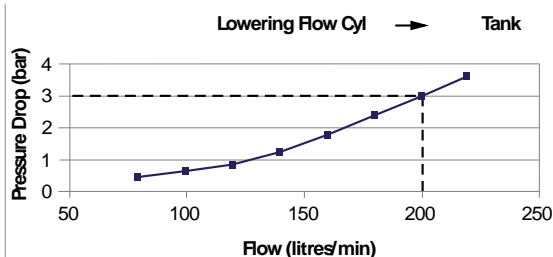
Hydraulic Control Valve for Tipper Applications - CT200/CT201

OPTIONS

Relief Valves (Single Pressure)	VC110 <input type="checkbox"/> <input type="checkbox"/> H <input type="checkbox"/> VC112 <input type="checkbox"/> <input type="checkbox"/> H <input type="checkbox"/>	
	090, 120, 135, 150, 165, 175, 200 bar 220 - 250 bar	
Relief Valves (Two Pressure)	VC115 H 150 - 220 bar adjustable VC116 H 150 - 250 bar adjustable	
Manual Lever (Replaces End Cap)	Spring return to neutral Available in vertical (RLA72) or horizontal (RLA73) versions.	
Independent Mounting Kit (Kits Include Plug for Port A)	Port A1 Pipe Connection	Port T Pipe Connection
	3/4" BSP	3/4" BSP
	1" BSP	1" BSP
Pressure Switch	1/8" BSP Body Raised Warning Kit (switch + washer + cover + light + buzzer + wiring)	SA2924
Port P Pump Inlet Elbow Adaptor	3/4" BSP	NR627
	1" BSP	NR634
Port A1 Outlet Adaptors for Tank Mounting	Pipe Connection	Straight
	3/4" BSP	NR611/27
	1" BSP	NR611/43

PERFORMANCE

Max. flow from pump	180l/min
Rated return flow to tank (see graph)	200l/min
Maximum relief valve pressure	250 bar
Maximum peak pressure	350 bar
Minimum air pressure	6 bar
Mass	6 kg

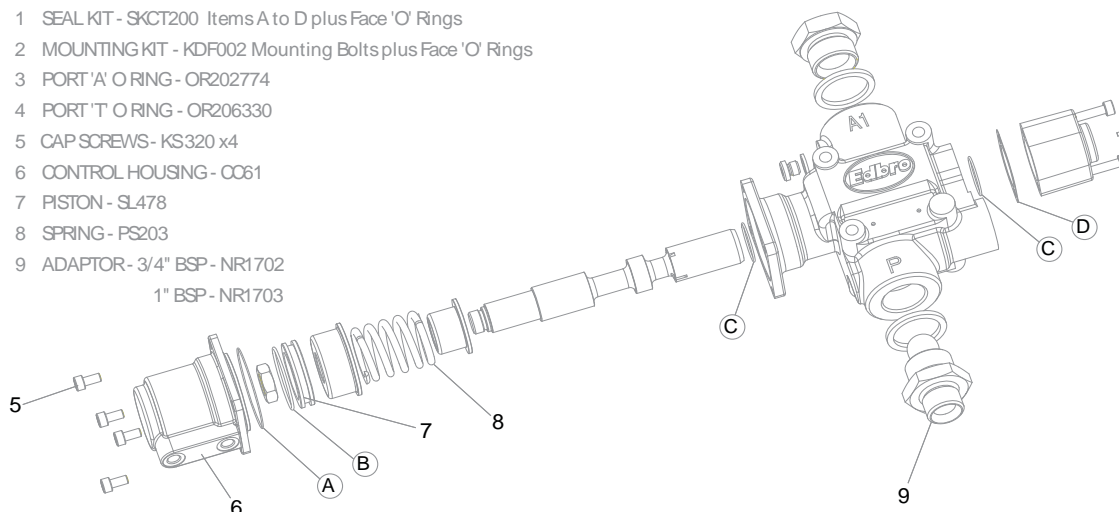


OIL & FILTRATION

- This valve is designed for tipper systems without filtration.
- The oil should be a good quality hydraulic oil to ISO 6743/4 HM32 for -15 to +27°C working temperature.
- For extended life or for higher duty applications, 25µm absolute return line filtration is recommended.
- Oil cleanliness to be maintained to ISO 4406 class 19/16.
- Oil should be replaced annually.

SPARES

- 1 SEAL KIT - SKCT200 Items A to D plus Face 'O' Rings
- 2 MOUNTING KIT - KDF002 Mounting Bolts plus Face 'O' Rings
- 3 PORT 'A' O RING - OR202774
- 4 PORT 'T' O RING - OR206330
- 5 CAP SCREWS - KS320 x4
- 6 CONTROL HOUSING - CC61
- 7 PISTON - SL478
- 8 SPRING - PS203
- 9 ADAPTOR - 3/4" BSP - NR1702
1" BSP - NR1703



All dimensions are given in mm unless otherwise stated. Technical Specifications are subject to change without notice.

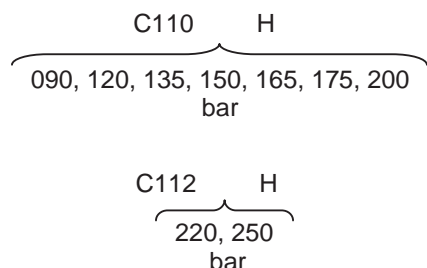
CT200 VALVE: Options & Accessories

Single Pressure Relief Valves

VC110xxxH & VC112xxxH

Replacement cartridges for the standard CT200 single pressure relief valve.

When ordering, use the following part numbers:



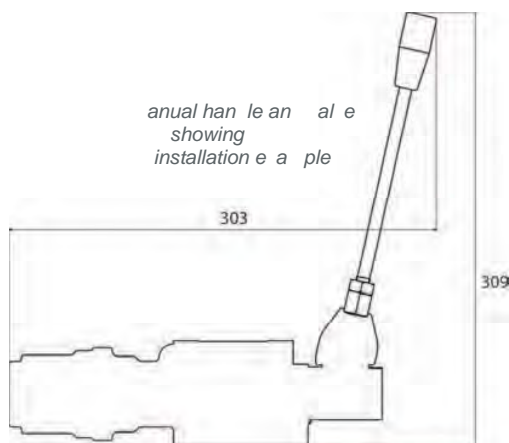
Manual Handle

RLA72 90° to valve face

RLA73 In-line with valve

For applications where an air control is not possible, Edbro offer the manual handle as an additional fit.

The end cap is removed and replaced by the manual handle fit.



Dual Pressure Relief Valves

VC115H & VC116H

An adjustable pressure relief valve, designed for tractor unit installations. This relief valve allows the tractor unit to be attached to a range of trailers with cylinders operating at different pressures.

The dual pressure relief valve replaces the single pressure relief valve, and is installed in the same valve fitting.

Two models are available:

C115H: 150/220 bar

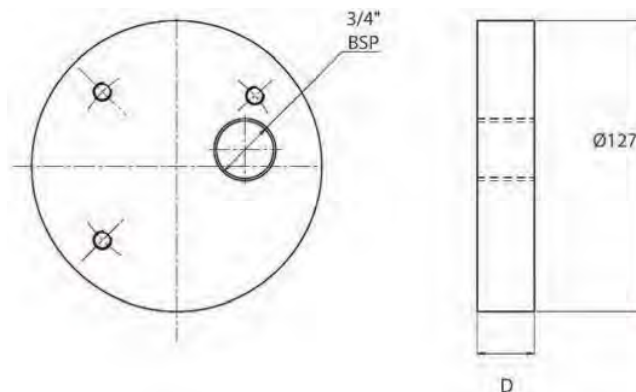
C116H: 150/250 bar

Valve Mounting Blocks

BP227 & BP227/AL

This block is designed for direct mounting of an Edbro CT200 valve. The block is available in steel or aluminium, and is to be welded directly to the oil tank.

Dimension D: Steel - 25mm
Aluminium - 30mm



Pump Inlet Adaptors

NR1969 & NR1697

Two inlet adaptors, allowing different size pipe fittings from the pump to be used:

3/4\"/>

1\"/>

Speed Control Kit

SA2879

When using the valve in pneumatic configuration, this is a replacement end cap which allows the spool stroke to be adjusted using a screw.

By limiting the stroke in this way, return flow through the valve can be limited, thus increasing control over the speed of operation.

All dimensions are given in mm unless otherwise stated. Technical Specifications are subject to change without notice.